

bionet

ZEN-PX4 Vet

WIRELESS HANDHELD PORTABLE DENTAL X-RAY SYSTEM



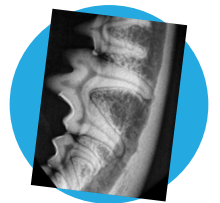
Full Color LCD
Veterinary-Specific
User Interface



Powerful Battery
Li-polymer 22.2VDC
1,000mAh



3.3 lb
Lightweight
One-Hand Operation
& Portability



Superior Image Quality
0.4mm Focal Spot
70kV Tube Voltage

Find out how the ZEN-PX4 Vet can give you a hand. 

sales@bionetus.com | 877 924-6638 | bionetus.com

ZEN-PX4 Vet

WIRELESS HANDHELD PORTABLE DENTAL X-RAY SYSTEM

The 3.3 pound, handheld, 100% portable ZEN-PX4 Vet x-ray system gives you the portability, flexibility, and high-quality diagnostic imaging you need. View images instantly on the full-color wide-view LCD screen with a PortView sensor. Send images via built-in WiFi or store images on the go with the included 16GB micro SD card. Backscatter and lead shielding safety features make the ZEN-PX4 Vet the superior handheld veterinary x-ray choice.

TECHNICAL SPECIFICATIONS & DIMENSIONS

X-ray Output	Tube Voltage	70 kV
	Tube Current	2 mA ±10%
X-ray Tube	Anode Type	Stationary
	Anode Angle	12.5°
	Focal Spot	0.4 mm
X-ray Control	Exposure Time Set	0.05 - 1.6 sec
Battery Capacity	Type	Li Polymer
Weight	Main Body	3.3 lb (1.5 kg)
Dimensions	Main Body	5.5" x 6.8" x 10" (14 x 17.3 x 25.4 cm)



This product is for veterinary use only.
Specifications are subject to change without notice.

PortView

DIGITAL INTRA-ORAL SENSOR

The VetPort digital intra-oral sensor delivers high resolution imaging and connects seamlessly with the ZEN-PX4 Vet handheld x-ray device. Ergonomic vertical bitewings for unparalleled comfort and IP67 rated for waterproof reliability day after day.


TECHNICAL SPECIFICATIONS & DIMENSIONS

SPECIFICATIONS	SIZE 1	SIZE 2
Image Size (H x V)	20 x 30 mm	26 x 34 mm
Total Pixels (H x V)	1,000 x 1,506 pixels	1,300 x 1,706 pixels
Pixel Size	20 x 20 µm	
Pixel Pitch (H x V)	20 µm	
Sensor Type	CMOS	
Dynamic Range	57 dB	75 dB
Interface	USB 2.0	



Specifications are subject to change without notice.

bionet

Find out how the ZEN-PX4 Vet can give you a hand. 
sales@bionetus.com | 877 924-6638 | bionetus.com
2691 Dow Ave #B, Tustin, CA 92780