

bionet

Brio XVet Accessory Reference Guide



Item Code:
B-CBL3-Brio

Product Description:
3-lead ECG extension cable
Includes 6 month warranty

Compatibility:

BrioXVet BMVetElite BMVet Pro



Item Code:
B-WIRE-N

Product Description:
3-lead ECG Cable
Includes 6 month warranty

Compatibility:

BrioXVet BMVetElite BMVet Pro

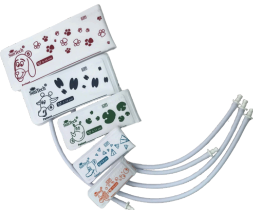


Item Code:
B-ICUFF

Product Description:
NIBP reusable cuff, 9 ~ 14.8 cm
Includes 6 month warranty

Compatibility:

BrioXVet BMVetElite BMVet Pro



Item Code:
B-CBL3-Brio

Product Description:
NIBP neonate cuffs set (1-5)

Compatibility:

BrioXVet BMVetElite BMVet Pro



Item Code:
B-NBPCBL

Product Description:
NIBP extension tube
Includes 6 month warranty

Compatibility:

BrioXVet BMVetElite BMVet Pro



Item Code:
B-SPCBL-BRIO

Product Description:
SpO2 extension cable
Includes 6 month warranty

Compatibility:

BrioXVet BMVetElite BMVet Pro



Please contact Bionet for further questions on accessories



Item Code:
B-SPO2-V

Product Description:
Multisite SpO2 Y sensor, 3ft
Includes 6 month warranty

Compatibility:
BrioXVet BMVetElite BMVet Pro



Item Code:
B-SPO2-R

Product Description:
Transflectance SpO2 sensor, 4ft
Includes 6 month warranty

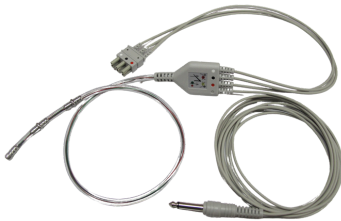
Compatibility:
BrioXVet BMVetElite BMVet Pro



Item Code:
B-TEMEXT-BRIO

Product Description:
Temperature Extension Cable
Includes 6 month warranty

Compatibility:
BrioXVet BMVetElite BMVet Pro



Item Code:
B-EPRB-M

Product Description:
Esophageal probe ECG/temperature
(Size Medium & Small available)
Includes 6 month warranty

Compatibility:
BrioXVet BMVetElite BMVet Pro



Item Code:
TEM-PRV-R

Product Description:
Temperature probe
(Esophageal/ Rectal)
Includes 6 month warranty

Compatibility:
BrioXVet BMVetElite BMVet Pro



Item Code:
PC-A (V)

Product Description:
Power cable
Includes 6 month warranty

Compatibility:
BrioXVet BMVetElite BMVet Pro



Item Code:
USB-WIFI24

Product Description:
USB WiFi dongle (2.4 GHz)

Compatibility:
BrioXVet BMVetElite BMVet Pro



Please contact Bionet for further questions on accessories



Item Code:
BAT-Brio

Product Description:
Battery for Brio Li-ion 10.8V, 4800mAh
Includes 6 month warranty

Compatibility:
BrioXVet BMVetElite BMVet Pro



Item Code:
Printer Assy_Brio

Product Description:
PRINTER ASS'Y_BRIO

Compatibility:
BrioXVet BMVetElite BMVet Pro



Item Code:
BM-PP

Product Description:
BM Paper, 2 rolls

Compatibility:
BrioXVet BMVetElite BMVet Pro



Item Code:
B-RMCO2

Product Description:
CAPNOSTAT 5 mainstream CO2 sensor
Includes 2 year warranty

Compatibility:
BrioXVet BMVetElite BMVet Pro



Item Code:
B-RSCO2-V

Product Description:
LoFlo sidestream CO2 sensor
Includes 2 year warranty

Compatibility:
BrioXVet BMVetElite BMVet Pro



Item Code:
DG-SENSOR[B]

Product Description:
Bionet dual gas module set
Includes 2 year warranty

Compatibility:
BrioXVet BMVetElite BMVet Pro



Item Code:
BAT-Brio-2 Option

Product Description:
Optional Battery (Li-ion, 10.8V, 6.50Ah)
Includes 6 month warranty

Compatibility:
BrioXVet BMVetElite BMVet Pro



Please contact Bionet for further questions on accessories



Item Code:
6063-00

Product Description:
Single patient use adult airway adapter

Compatibility:
BrioXVet BMVetElite BMVet Pro



Item Code:
6312-00

Product Description:
Single patient use neonate airway adapter

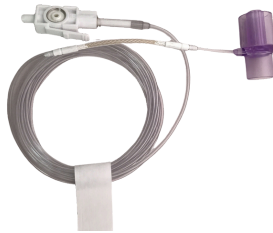
Compatibility:
BrioXVet BMVetElite BMVet Pro



Item Code:
3473ADU-00

Product Description:
Adult/pediatric: ET tube > 4 mm

Compatibility:
BrioXVet BMVetElite BMVet Pro



Item Code:
3473INF-00

Product Description:
Infant/neonate: ET tube ≤ 4 mm

Compatibility:
BrioXVet BMVetElite BMVet Pro



Item Code:
3475-00

Product Description:
Sampling line with male Luer adapter

Compatibility:
BrioXVet BMVetElite BMVet Pro



Item Code:
DGA-WT

Product Description:
Water trap

Compatibility:
BrioXVet BMVetElite BMVet Pro



Item Code:
DGA-SL

Product Description:
Sample line with Luer lock (8')

Compatibility:
BrioXVet BMVetElite BMVet Pro



Please contact Bionet for further questions on accessories



Item Code:
DGA-AAS

Product Description:
Airway adapter (straight)

Compatibility:

BrioXVet BMVetElite BMVet Pro



Item Code:
DGA-AAL

Product Description:
Airway adapter (L type)

Compatibility:

BrioXVet BMVetElite BMVet Pro



Item Code:
B-WIRE-SA

Product Description:
3 lead ECG cable (Snap type)
Includes 6 month warranty

Compatibility:

BrioXVet BMVetElite BMVet Pro



Item Code:
B-ME-S

Product Description:
(30) ECG monitoring electrode
snap type

Compatibility:

BrioXVet BMVetElite BMVet Pro



Item Code:
B-CBL5-Brio

Product Description:
Extension cable for 5 Lead ECG cable
Includes 6 month warranty

Compatibility:

BrioXVet BMVetElite BMVet Pro



Item Code:
B-WIRE5-N

Product Description:
5 lead ECG cable (alligator type)
Includes 6 month warranty

Compatibility:

BrioXVet BMVetElite BMVet Pro



Item Code:
ECG-GEL

Product Description:
ECG GEL (260ML)

Compatibility:

BrioXVet BMVetElite BMVet Pro



Please contact Bionet for further questions on accessories



Item Code:
B-SPO2-CLIP

Product Description:
Replacement clip for multi-site sensor

Compatibility:
BrioXVet BMVetElite BMVet Pro



Item Code:
B-CCUFF

Product Description:
NIBP child cuff (20.5~28.5 cm)
Includes 6 month warranty

Compatibility:
BrioXVet BMVetElite BMVet Pro



Item Code:
B-PCUFF

Product Description:
NIBP pediatric cuff (13.8~21.5 cm)
Includes 6 month warranty

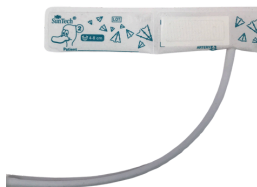
Compatibility:
BrioXVet BMVetElite BMVet Pro



Item Code:
B-NCUFF1

Product Description:
NIBP neonate cuff #1

Compatibility:
BrioXVet BMVetElite BMVet Pro



Item Code:
B-NCUFF2

Product Description:
NIBP neonate cuff #2

Compatibility:
BrioXVet BMVetElite BMVet Pro



Item Code:
B-NCUFF3

Product Description:
NIBP neonate cuff #3

Compatibility:
BrioXVet BMVetElite BMVet Pro



Item Code:
B-NCUFF4

Product Description:
NIBP neonate cuff #4

Compatibility:
BrioXVet BMVetElite BMVet Pro



Please contact Bionet for further questions on accessories



Item Code:
B-NCUFF5

Product Description:
NIBP neonate cuff #5

Compatibility:

BrioXVet BMVetElite BMVet Pro



Item Code:
B-IBPEXT-Brio

Product Description:
IBP Extension Cable
Includes 6 month warranty

Compatibility:

BrioXVet BMVetElite BMVet Pro

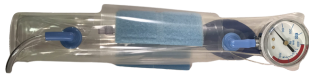


Item Code:
MX9505T

Product Description:
TranStar® 80" single line monitoring kit

Compatibility:

BrioXVet BMVetElite BMVet Pro

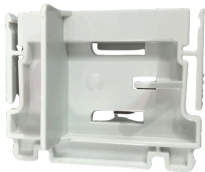


Item Code:
MX4810

Product Description:
C-Fusor® 1000ml pressure infusion

Compatibility:

BrioXVet BMVetElite BMVet Pro



Item Code:
MX800

Product Description:
Modular transducer mounting plate

Compatibility:

BrioXVet BMVetElite BMVet Pro



Item Code:
MX240

Product Description:
Pole clamp for mounting a transducer plate

Compatibility:

BrioXVet BMVetElite BMVet Pro



Item Code:
BM-CART-Brio

Product Description:
Rolling Cart for Brio Series Monitor

Compatibility:

BrioXVet BMVetElite BMVet Pro



Please contact Bionet for further questions on accessories



Item Code:
BM-WM-Brio

Product Description:
Wall Mount for Brio Series Monitor

Compatibility:
BrioXVet BMVetElite BMVet Pro



Item Code:
Stylus-Brio

Product Description:
Touch Screen Stylus for Brio

Compatibility:
BrioXVet BMVetElite BMVet Pro



Please contact Bionet for further questions on accessories